

® *Pierre René*  
PROFESSIONAL



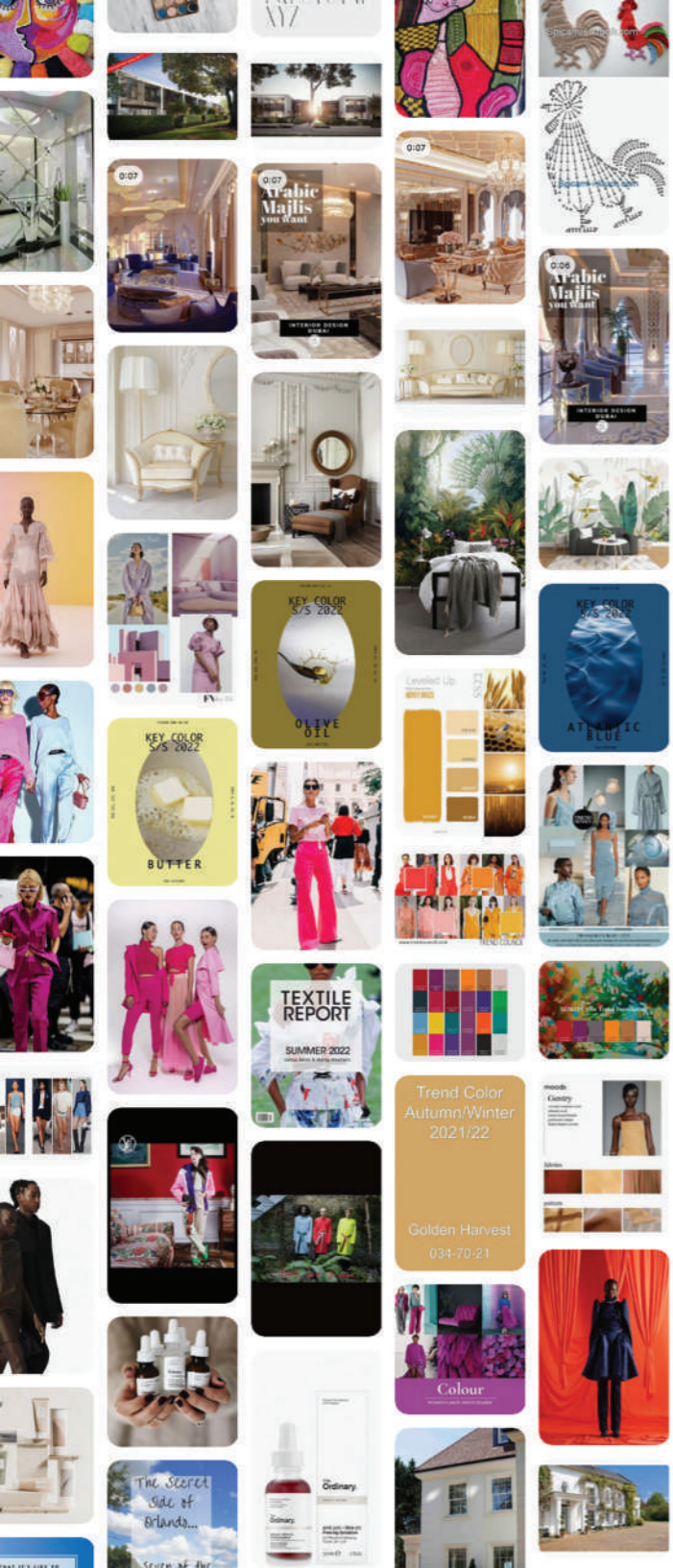
2021/22

® *Pierre René*  
PROFESSIONAL

**PIERRE RENÉ PROFESSIONAL**  
43, AVENUE CHAMPS-ÉLYSÉES  
78008 PARIS, FRANCE

[WWW.PIERRENE.COM](http://WWW.PIERRENE.COM)



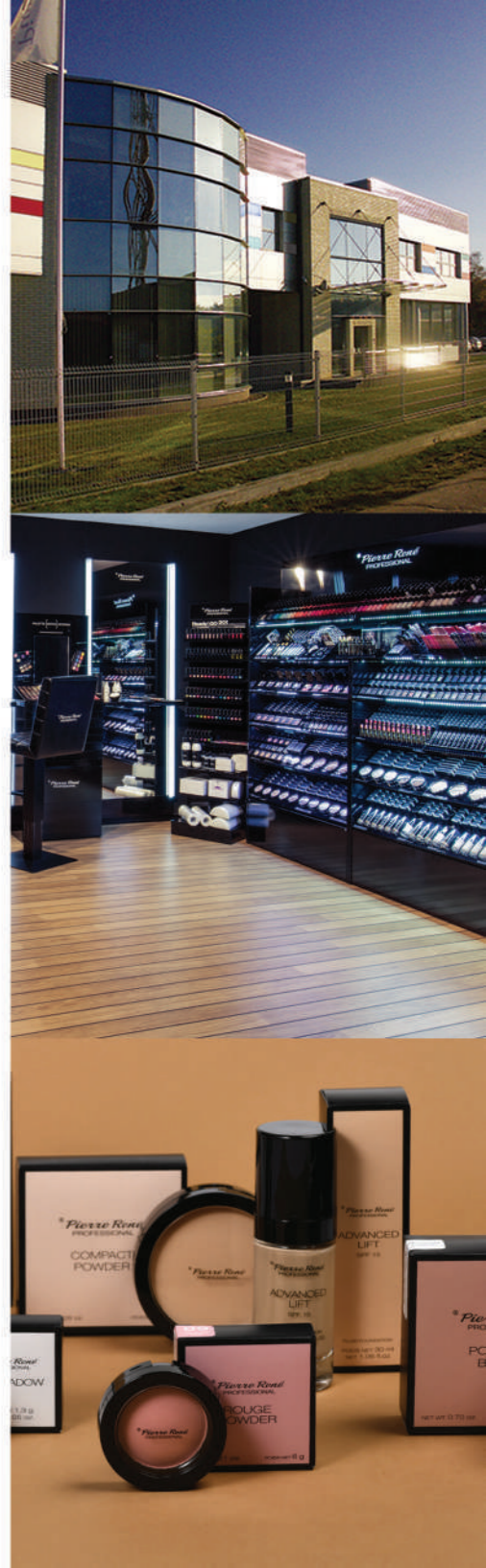


# COLOR INSPIRATIONS

	<b>PANTONE®</b> 19-4326 TPX Reflecting Pond		<b>PANTONE®</b> 18-1547 TPX Bossa Nova
	<b>PANTONE®</b> 19-4038 TCX Gibraltar Sea		<b>PANTONE®</b> 14-0957 TPX Spectra Yellow
	<b>PANTONE®</b> 17-1744 TPX Calypso Coral		<b>PANTONE®</b> 12-0740 TPX Limelight
	<b>PANTONE®</b> 18-2436 TPX Fuchsia Purple		<b>PANTONE®</b> 17-1558 TPX Grenadine
	<b>PANTONE®</b> 15-1164 TPX Bright Marigold		<b>PANTONE®</b> 18-1662 TCX Flame Scarlet
	<b>PANTONE®</b> 17-4728 TPX Algiers Blue		<b>PANTONE®</b> 13-0650 TPX Sulphur Spring
	<b>PANTONE®</b> 18-0513 TPX Bungee Cord		

## WHO WE ARE?

PIERRE RENÉ IS A COMPANY WITH YEARS OF EXPERIENCE IN THE BEAUTY INDUSTRY. SINCE 1993 WE HAVE BEEN HELPING WOMEN TO EMPHASIZE THEIR NATURAL BEAUTY. WE HAVE THE EXPERIENCE AND KNOW-HOW TO TURN IDEAS AND TRENDS INTO PRODUCTS.





#FACE #BEAUTY #MAKEUP #SKINBALANCE #POWDERBALLS #POWDER  
#HIGHLIGHTER #MATTEACTIVE #CONCEALER #ADVANCEDLIFT

## MAKE UP BASES

Use as a first step of the make up, under the fluid foundation or separately apply with a make up sponge, synthetic brush or tap gently with fingers.

ILLUMINATING



### ILLUMINATING MAKE UP BASE

- illuminates and smoothens the skin
- contains light - reflecting particles
- extends the durability of the make up
- prepares skin for the make up
- makes it easier to apply fluid foundation

SMOOTHING



### SMOOTHING MAKE UP BASE

- perfectly smoothens the skin
- extends the durability of the make up
- prepares skin for the make up



# LIGHT HIDING

VELVETY SMOOTH

01 02 04 05 06 07 08 09

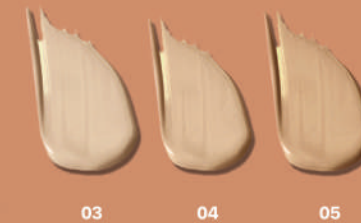
## CONTOUR CONCEALER

Liquid concealer covering dark circles under eyes, signs of fatigue, smile wrinkles, discolorations and other skin imperfections. It also allows contouring of selected parts of the face, and light smooth texture spreads well, giving natural finishing. Suitable for all skin types. Odourless



## ADVANCED LIFT

Lifting foundation which provides an immediate effect of skin rejuvenation already after the first application. An exclusive technologically advanced formula enhances the natural skin protection barrier. Deeply soothing plant extracts which fulfil the function of natural botox (from the Spilanthes Acmella flower) and vitamins A, E and PP improve skin firmness and density.





# SKIN BALANCE

SKIN  
BALANCE  
COVER

FLUID FOUNDATION

Pierre René  
PROFESSIONAL

COVER

## SKIN BALANCE

Waterproof foundation. It covers all skin imperfections. It adapts to the skin structure perfectly and restores its shine and elasticity. The unique formula of the beauty product is wellabsorbed and it stays on for many hours. It guarantees radiant and youthful looks. The luxurious formula contains plant extracts and vitamin E.



17 soft porcelain 18 warm ivory 19 cool ivory 20 champagne 21 porcelain 22 light beige



23 nude 24 beige 26 bronze 27 cream 28 medium beige 31 mocha brown 32 dark chocolate



## MATTE ACTIVE

Matting foundation for oily, mixed skin or prone to irritations. Innovative Active formula provides matte and lasting effect with proper skin hydration. Perfect for correcting imperfections and giving the skin natural and silky appearance.



01 clear light    02 porcelain    04 beige



05 soft porcelain    06 warm ivory    07 cool ivory



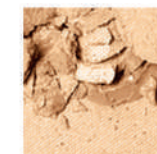


## COMPACT POWDERS

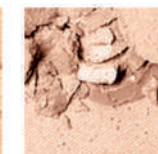
Pressed powder perfectly fixes the foundation, evens out the skin tone and ensures an impeccable appearance all day long. The formula based on olive oil, jojoba oil and minerals guarantees the appropriate skin moisture levels, care, protection and a velvety finish of the make-up.



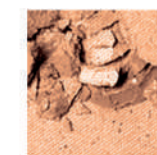
### POWDERS



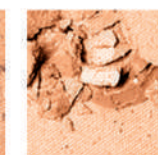
03 transparent



05 soft beige

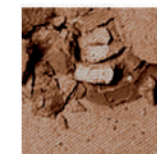


06 natural bronze

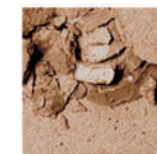


10 day dream

### BRONZING POWDERS



13 bronzing face



18 warm bronze



## LOOSE POWDERS

00 rice loose powder

### RICE LOOSE POWDER

- matting effect
- for oily or mixed skin
- with a rice starch
- absorbing the sebum

03 loose powder

### LOOSE POWDER

- matting effect
- natural look
- satin finish



01 champagne

## LIQUID SHIMMER

A liquid shimmer combining delicate shades with sparkling particles for an eye-catching, glamorous make-up. The product's universal formula makes it a perfect highlighter for the face and body or a base for your make-up. Add a small amount to the base for gentle illumination. Light-reflecting particles contained in the formula give the skin a youthful and radiant appearance, while the pores and fine lines become less visible.

## HIGHLIGHTING POWDER

Highlighting powder for the face and body. Owing to pearl particles, it excellently highlights the skin, reduces the wrinkles and covers signs of tiredness. The powder makes the skin look bright, more healthy and radiant for many hours. Ideal for contouring and strobing. It is also excellent for the body emphasising natural tan and covering the minor imperfections of the skin.



01 glazy look





## POWDER CONTOURING 1

Trio that contains contouring powder, bronzer and highlighter. It allows professional face modelling in three simple steps.

## POWDER CONTOURING 2

Multifunctional face contouring palette. It enables professional face contouring in three simple steps: bronzer, rouge and highlighter.



## ROUGE POWDER

- Pressed powder blush
- Colours the skin with light mist
- Ensures delicate shine and fresh appearance
- Excellent for subtle modelling of face contour

02 pink fog

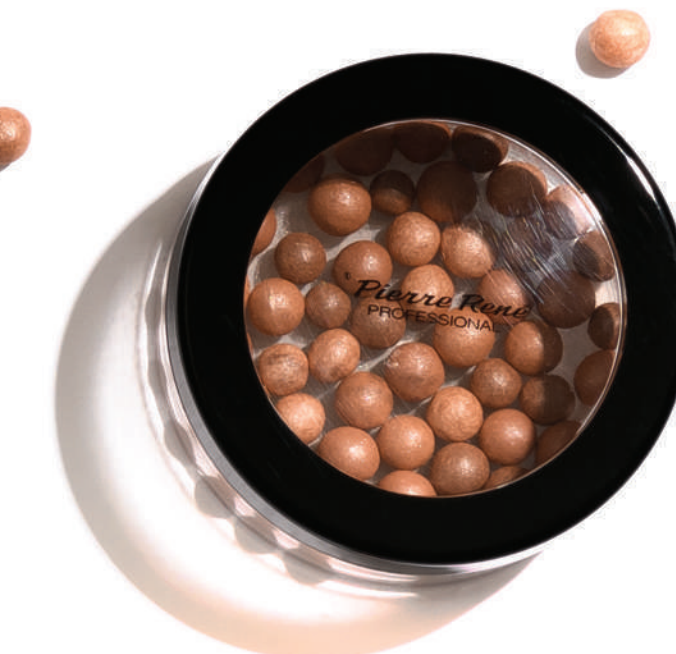
03 perfect peach

07 rusty cheek

09 delicate pink

## POWDER BALLS

- Professional powder balls
- Excellent for modelling of face contour
- Colours the skin with light mist
- Can be used for face and body



## PINCH ME

Trio that contains contouring powder, bronzer and highlighter.  
It allows professional face modelling in three simple steps.



## SHINE ME

- Pressed powder blush
- Colours the skin with light mist
- Ensures delicate shine and fresh appearance
- Excellent for subtle modelling of face contour



*Amelia Josepariah*

## LOOSE POWDER SHIMMERING

Illuminating body oil perfectly enhances the tan. It gives effective glow and radiance to the skin. The contents of the sweet almond oil which is the source of many vitamins: A, B1, B2, B6, D, E and unsaturated fatty acids will make your skin moisturized, soft and elastic. It is suitable for all skin type.

## BRONZING POWDER SHIMMERING

Baked bronzing and illuminating powder for face and body. It allows a delicate contouring and illumination. It gives the possibility of color grading for more contouring and warming the face and body. Provides a satin finish, the skin looks fresh and radiant.

## BODY OIL SHIMMERING

Illuminating body oil perfectly enhances the tan. It gives effective glow and radiance to the skin. The contents of the sweet almond oil which is the source of many vitamins: A, B1, B2, B6, D, E and unsaturated fatty acids will make your skin moisturized, soft and elastic. It is suitable for all skin type.

NEW



NEW



NEW





#EYES #BEAUTY #MAKEUP #MASCARA #EYESHADOW #LASHES  
#EYELINER #EYEMATIC #BROWLINER #BROWPOMADE



## **UNDER EYE POWDER**

Smoothing and brightening under eye powder.  
Light and vegan formula is perfect for the delicate skin around the eyes.

- finely ground with illuminating micro-particles
- has smoothing and illuminating properties and optically reducing dark circles under the eyes
- rich in caring and anti-wrinkle substances





## BASIC EYE SHADOW

BASIC EYESHADOW is a collection of classic eyeshadows with long-lasting matt and metallic formula. Each of 16 available shades is a highly pigmented, long-lasting eyeshadow, comfortable in application and extremely easy to blend. The collection includes both neutral shades, as well as bold, expressive colours, providing an intense dose of colour in both classic and evening make-up. Application of Eyeshadow Primer allows you to extend the durability of make up and get more intense and deeper colour.



## EYE SHADOW PRIMER

Matting eye shadow primer with vitamin E and sunflower oil changes the eyelid into a smooth canvas, facilitating the application of colour, increasing its durability and intensity. Care ingredients moisturise and nourish the delicate skin of eyelids.



001 wherever 002 naked morning 003 never ending 004 my dear nude 005 cool evening 006 be with me



007 warm arms 008 my time 009 never ever 010 unfinished 011 cozy touch 012 wedding day



013 crazy night 014 hotpoint 015 lazy afternoon 016 flying moment



## LIQUID PRIMER

Multi-purpose liquid for make-up fixation. Perfect for extending the durability of the products. Add the small amount to your powder product for wet application and turn the eyeshadow into a liquid eyeliner. It will also quickly and effectively restore the right consistency of dried out products.

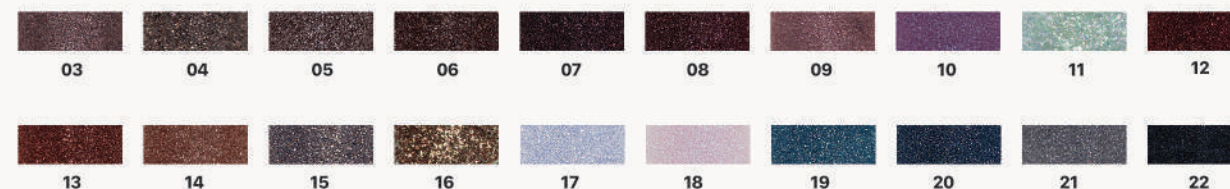
## GLITTER PRIMER

Transparent glue for loose pigments and eye shadows. Increases durability and prevents falling of the applied products, and the colours are more intense. Forget falling glitter and take control over each shiny fleck.



## PURE PIGMENT

Intense pure pigment that provides a deep and strong color and amazing glow. Perfect for eye and lip make-up and as nail decorations. Applied on Glitter Primer it gives a waterproof, intensive and juicy colors.





*6th sense*

## EYE SHADOW PALETTE

Palette of harmoniously selected eye shadows ensuring natural colour and long-lasting makeup. Eye shadows from the palette allow you to create a delicate daytime makeup as well as more expressive styling for the evening. Each palette is a perfect combination of carefully selected shades and textures from silky matte, through cream-satin, glossy-pearl, up to shiny glitter.

*6th sense*



01 golden river



02 heatland



03 galactic stones



04 flooded purples



05 vivid clouds



06 colorado springs



Ustka

## EYE SHADOW PALETTE

This unusual combination evokes the warmest memories of summer, the charm of the beautiful nature found in Ustka, the Baltic Sea at any time of year, a romantic sunset and a picturesque sandy beach.

Heavily pigmented shadows with various formulas - matte, satin, glitter and metallic will meet the requirements of true makeup artists, professional makeup artists and women who love wearing casual makeup.





# Lash Fame

## LASH FAME MASCARA

Eyelash volume-boosting  
mascara.

Creamy formula suited to  
the hourglass-shaped brush  
thickens and curls the lashes,  
giving a multidimensional effect.  
The special shape of the brush  
and different lengths of the fibres  
allow you to reach every lash.  
Extremely black and thick lashes!



# Magnolia

MASCARA

Coming soon.





Seductive, elegant look?

## ELEGANCE VOLUME MASCARA

It's a volumizing mascara. Its unique creamy formula with biotin and vitamin E will nourish and strengthen eyelashes. An hourglass silicon brush will ensure extreme separation and unique volume.



# Apocalypse

## APOCALYPSE MASCARA

Mascara that gives the look extraordinary intensity and depth. Just one move with a brush makes a delicate, creamy and flexible formula clearly thickens eyelashes and gives them a magnetic shade of black. Microfiber brush thoroughly distributes mascara providing perfect cover and shape for every eyelash without any load.

# AQUA SPORT

## MASCARA

Waterproof mascara is indispensable for fun in the water in the summer and on hot days! The classic brush adapts itself to all types of eyelashes and guarantees perfect separation and clump-free make-up.



Pierre René  
PROFESSIONAL

AQUA SPORT  
100% WATERPROOF

01

02

04

05



### VOLUME RICH MASCARA

- Thickening mascara, effects just after first application
  - Water removable formula
- Light, creamy formula is perfect for sensible eyes and delicate eyelashes



### LONG LASH MASCARA

- Lengthening mascara
- Formula containing 2mm nylon microfibres
- Thanks to microfibres, lengthening effect up to 30%



01 carbon black 02 excentrick brown

## GEL EYELINER

A waterproof eyeliner which guarantees long-lasting make-up. A profession brush allows you to draw perfect lines. An innovative gel consistency facilitates application, prevents irregularities and allows you to do artistic make-up. Waterproof.



## DISC EYELINER

Liquid eyeliner with applicator in the form of a rotating wheel. It allows you to quickly and accurately make a thin or thick lines. Highly pigmented formula in the colour of intense black, quickly dries up and easily stays on the eyelid.



## PEN EYELINER

A pen eyeliner which allows you to draw a precise line on the eyelid. It doesn't smudge and dries quickly, thus guaranteeing stable eye make-up. Waterproof.



## SUPER CONTOUR LINER

Automatic eye pencil with grinding sponge and sharpener. Perfect for precise lines or smoky eyes makeup. Delicate, creamy formula perfectly blends and is long-lasting. Deeply black colour will underline every look.



## PRECISION INK EYELINER

- Traditional eyeliner in an ink bottle
- Easy to use even for beginners
- Allows to draw perfect line staying for hours



01 black



02 brown



## ROYAL LASHES

- Thickening and lengthening mascara
- Ensures easy and precise application
  - Lash conditioning formula



## ICONIC LASHES

- Thickening and modelling effects
- Silicone brush and creamy formula
  - Ensures easy application even in the inner corner



## SUPER CURLY

- Curling and thickening mascara
  - Specially profiled brush
  - Lash conditioning formula



## ROYAL LINER

Liquid eyeliner in an intensive black colour, which makes your look deep and expressive. A convenient, flexible applicator makes it possible to draw a satin shiny line. The formula of the product contains film-forming ingredients, ensures a strong cover of the lid already with the first stroke of brush. Waterproof, ophthalmologically tested.



## ROYAL PENCIL

Intense black pigment eyeliner pencil with a new delicate and creamy formula guarantees easy application and blending. Longwear, does not smudge, stays all day. Does not irritate the skin, appropriate for sensitive eyes.

## WATERLINE PENCIL

- Durable waterline kajal
- 100% waterproof formula
  - Soft consistency
- Visually "opens" the eyes



## EYELINER

- Typical wooden contour eyeliner
  - Long-lasting formula
- Makes it possible to enhance the eye contour
- Easy to draw a precise line



01 02 03 04

## EYE MATIC

A new generation automatic contour eyeliner which guarantees extremely smooth and precise makeup! An exceptionally light formula ensures a strong colour and excellent coverage. It stays on the eyelids for many hours. To be used as a kajal. Waterproof.



1 7 8 9 10 11 12 13

## BROW PALETTE

Eyebrow palette with 3 perfectly made-to-measure shades. Easy to apply and gives a natural effect thanks to the soft and powdered formula. Highly pigmented product gives intensified look. Use it together or separately to create the perfect brow color. Expert advice: Remember that the hairs darken the effect, so choose shades that are half as dark as your natural eyebrows.

BRUNETTE



BLONDE



DARK BROWN



## BROW POMADE

Pomade for styling eyebrows, which easily allows you to obtain the effect of perfect eyebrows with ideal shade and shape. Quick-drying product, does not smudge, allows for gradation of the intensity of colour and provides a light, powder finish.



01 light brown

02 brown

03 dark brown





# BROW GEL

## **BROW GEL**

Transparent eyebrow shaping gel. The light-weight texture and the precise brush make eyebrow styling incredibly easy. Quick-drying and extremely long-lasting.

## **BROW LINER**

Eye brow shaping pencil with a special brush. The soft, powder-like formula provides a matt effect and allows you to play with the intensity of your look. This special brush not only tames unruly eyebrows, but also helps you blend the product and achieve a natural, lasting effect.



## **EYEBROW BRUSH**

Brow brush to correct eyebrow line. Enables application of waxes, powders and cream products.



S  
P  
E  
C  
I  
A  
L



#LIPS #LIPSTICK #POMADE #MATTE FLUID LIPSTICK # ROYAL LIPSTICK #MAKEUP  
#LIPLINER #COVER GLOSS #MOUTH # KISS ME

## MATTE FLUID LIPSTICK

Creamy liquid lipstick which ensures an intensive and long-lasting colour with a silky matt finish effect. The light formula was enriched with vitamin E and shea butter, thanks to which the lips are very well moisturised and smooth without stickiness. A convenient sponge applicator facilitates the even application of the product and the intensive colours.



Matte Fluid Lipstick





## COVER GLOSS

Lip gloss with an intense colour and satin finish. Thanks to the intensively covering creamy formula, the lips stay incredibly glossy, refined and coloured for a long time. Argan oil additionally cares for and moisturises the lips making them smooth and tempting.



01 blooming almond



02 creme d'nude



03 soft shell



07 clear

## LIP OIL

Lip gloss with an intense colour and satin finish. Thanks to the intensively covering creamy formula, the lips stay incredibly glossy, refined and coloured for a long time. Argan oil additionally cares for and moisturises the lips making them smooth and tempting.



## CASHMIRE LIPSTICK

Cashmere lipstick is an intense colour, satin finish, absolute comfort and durability. Silky cream formula with the addition of rice oil and vitamin E moisturises and nourishes the delicate skin of the lips, and specially selected pigments enhance the reflecting effect of the light reflection, giving the lips a subtle gloss. An elegant, magnetic packaging.

### BREATHTAKINGLY SMOOTH LIPS FULL OF COLOUR!



## LIP MATIC

A new generation automatic contour lip liner with a creamy consistency which guarantees exceptionally smooth and precise lip makeup. It ensures full colour and coverage. The long-lasting formula stays on your lips for many hours.  
Waterproof.





## FULL MATTE LIPSTICK

Sensual matt lipstick that transcends colour boundaries with incredible intensity. Waterproof, and it gives a full matte finish effect. It covers the lips with a stunning colour with just one stroke. The luxurious formula contains vitamin E and moisturising oils, and it guarantees a perfect combination of a deep colour, durability and optimal lip moisturisation. Discover all the shades of femininity without any compromises.

## ROYAL MAT LIPSTICK

An exclusive collection of lipsticks in carefully selected intensive shades including both subtle nude, cool shades of purple and fiery red. It combines delicate powder particles and moisturising oils for the effect of mat yet soft and moisturised lips. Owing to high pigment concentration, the obtained colour is intense and full of life, stays on your lips for a longer time and makes them look like jewels shrouded in a vibrant colour.



### FULL MATTE LIPSTICK



### ROYAL MAT LIPSTICK



FACECHART

#1

#2



EYE SHADOW PALETTE  
beach



BROW PALETTE  
dark brow



POWDER CONTOURING  
no 2



MATTE FLUID LIPSTICK  
no 11



LIP MATIC  
no 07



LASH FAME  
mascara



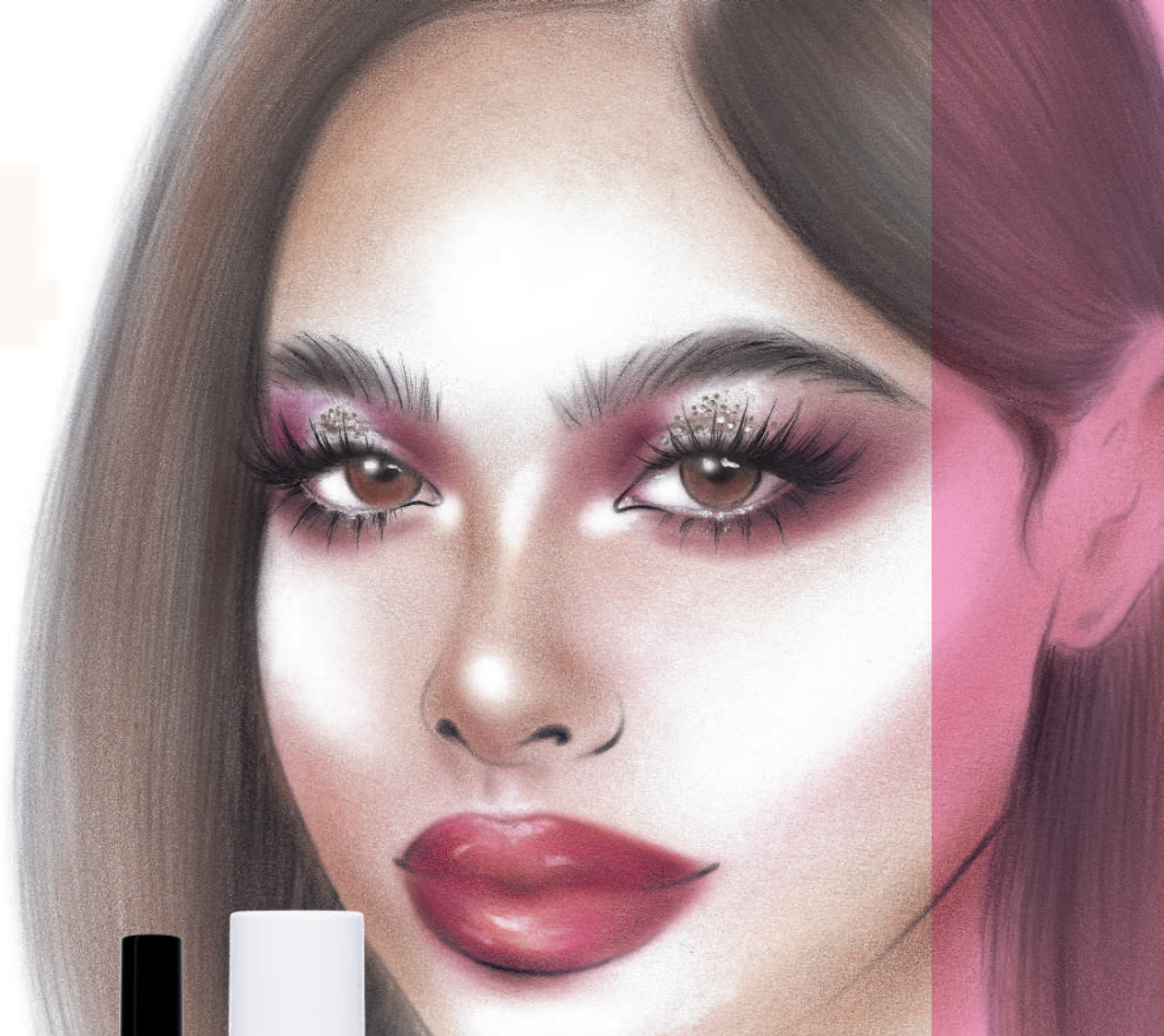
COMPACT POWDER  
no 18



EYE SHADOW PALETTE  
sunset

FACECHART

#3 #4



EYE SHADOW PALETTE  
sea



COVER GLOSS  
no 03



AQUA SPORT  
mascara



EYE MATIC  
no 13



BROW GEL



MAKE UP BASE  
illuminating



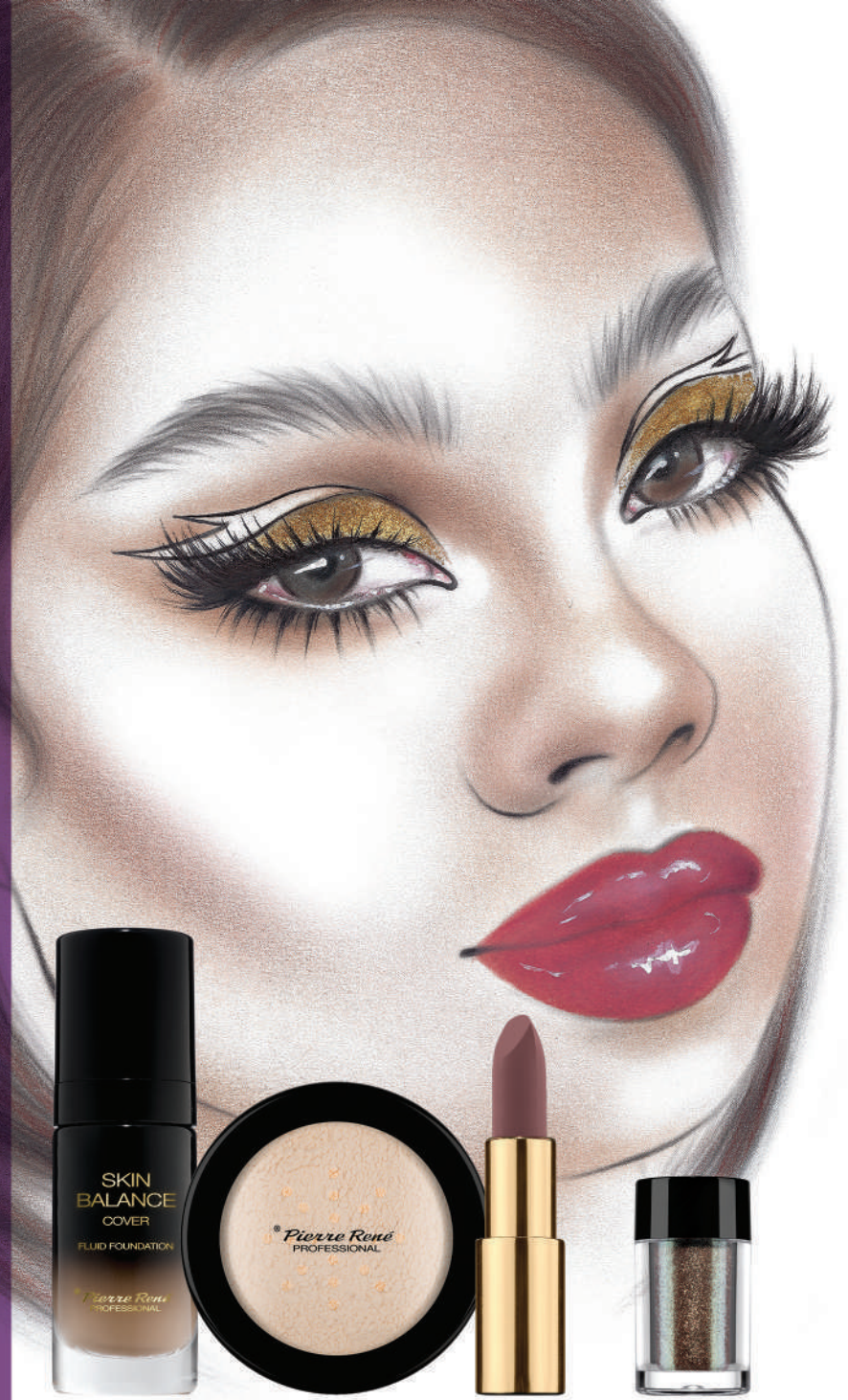
ROUGE POWDER  
no 07



6TH SENSE EYE SHADOW PALETTE  
no 05

FACECHART

#5 #6



SKIN BALANCE fluid foundation



LOOSE POWDER no 03



ROYAL LIPSTICK no 04



PURE PIGMENT no 16



CONTOUR CONCEALER



GEL EYELINER



MATTE FLUID LIPSTICK no 08



UNDER EYE POWDER



#NAILS #HYBRID #NEWFORMULA #COLOR #BASE  
 #BUILDINGBASE #TOPCOAT #PRIMER

## HYBRID SYSTEM



### PRIMER

Degreasing preparation. Removes moisture from the nail surface, degreases it and prepares it for primer gel application.



### ACID PRIMER

Preparation that prepares your natural nail plate for the application of gel, acrylic or hybrid nail polish. It degreases and etches the nail plate, which significantly increases adhesion of preparations. For professional use only. Strongly irritating. Do not use on the skin. In case of eye contact, rinse with plenty of water and seek medical advice.



### BASE COAT

Gel primer - a base for coloured polish. It increases the adhesion of the polish to the nail plate and extends its durability.



### COLOR BUILDING BASE

The basic building gel for use as a base for a hybrid varnish or coloured gel. Ideal for lengthening nails with templates or moulds and strengthening the natural nail plate. Self-levelling, does not spill during modelling.



### COLOR

Hybrid coloured polish. Provides a beautiful, deep colour to your nails.



### TOP COAT

TOP COAT gel - a hardening preparation for coloured nail polish. It gives shine to coloured polish, extends the manicure durability.



### DRY TOP

Super durable, hybrid top coat with a shine effect; it does not produce a dispersion layer so it does not require washing after the hardening process. Perfect for decorating hybrid manicure with dust.



### MATTE TOP COAT

The top coat gives a matt effect and makes the manicure last longer. It gives velvety, matt finish to hybrid polishes. It forms a hard, chip-resistant coating. When used directly on clean nails, it smooths out the nail, hardens it and prevents it from breaking.



COLOR BASE

COLOR BUILDING BASE GLOSSY WHITE UV / LED NEW FORMULA	COLOR BUILDING BASE LIGHT ROSE UV / LED NEW FORMULA	COLOR BUILDING BASE ROSE UV / LED NEW FORMULA	COLOR BUILDING BASE ROSE UV / LED NEW FORMULA	COLOR BUILDING BASE GLOSSY PINK UV / LED NEW FORMULA	COLOR BUILDING BASE PINK UV / LED NEW FORMULA	COLOR BUILDING BASE NATURAL UV / LED NEW FORMULA	COLOR BUILDING BASE NATURAL UV / LED NEW FORMULA	COLOR BUILDING BASE PEACH CREAM UV / LED NEW FORMULA
<i>Pierre René</i> PROFESSIONAL	<i>Pierre René</i> PROFESSIONAL	<i>Pierre René</i> PROFESSIONAL	<i>Pierre René</i> PROFESSIONAL	<i>Pierre René</i> PROFESSIONAL	<i>Pierre René</i> PROFESSIONAL	<i>Pierre René</i> PROFESSIONAL	<i>Pierre René</i> PROFESSIONAL	<i>Pierre René</i> PROFESSIONAL
HYBRID	HYBRID	HYBRID	HYBRID	HYBRID	HYBRID	HYBRID	HYBRID	HYBRID
115 OPAL BISCUIT UV / LED NEW FORMULA	01 WHITE UV / LED NEW FORMULA	07 PINK UV / LED NEW FORMULA	06 PUDDING UV / LED NEW FORMULA	05 PANNACOTTA UV / LED NEW FORMULA	04 NUDE UV / LED NEW FORMULA	02 FRENCH UV / LED NEW FORMULA	103 TEA ROSE UV / LED NEW FORMULA	
105 PEACH UV / LED NEW FORMULA	03 MELON UV / LED NEW FORMULA	104 PEACH CREAM UV / LED NEW FORMULA	32 SEPIA UV / LED NEW FORMULA	107 ROSE PERFUME UV / LED NEW FORMULA	109 SANDALWOOD UV / LED NEW FORMULA	108 CREAMY BEIGE UV / LED NEW FORMULA	111 BRILLIANT PINK UV / LED NEW FORMULA	
102 OLD ROSE UV / LED NEW FORMULA	116 MOCHA UV / LED NEW FORMULA	10 NEON PITAYA UV / LED NEW FORMULA	15 BLUSH UV / LED NEW FORMULA	16 RASPBERRY UV / LED NEW FORMULA	82 NEON FUCHSIA UV / LED NEW FORMULA	62 MAGENTA UV / LED NEW FORMULA	98 VIVID VIOLET UV / LED NEW FORMULA	
101 DEEP BURGUNDY UV / LED NEW FORMULA	113 SZEHEREZADA UV / LED NEW FORMULA	106 LIVING CORAL UV / LED NEW FORMULA	11 ROSE UV / LED NEW FORMULA	13 WATERMELON UV / LED NEW FORMULA	19 CRANBERRY UV / LED NEW FORMULA	83 NEON PINK UV / LED NEW FORMULA	18 CRIMSON UV / LED NEW FORMULA	
<i>Pierre René</i> PROFESSIONAL	<i>Pierre René</i> PROFESSIONAL	<i>Pierre René</i> PROFESSIONAL	<i>Pierre René</i> PROFESSIONAL	<i>Pierre René</i> PROFESSIONAL	<i>Pierre René</i> PROFESSIONAL	<i>Pierre René</i> PROFESSIONAL	<i>Pierre René</i> PROFESSIONAL	
HYBRID	HYBRID	HYBRID	HYBRID	HYBRID	HYBRID	HYBRID	HYBRID	

COLOR

20 BLOOD UV / LED NEW FORMULA	125 RASPBERRY SMOOTHIE UV / LED NEW FORMULA	118 DEEP RUBY UV / LED NEW FORMULA	114 REBELLIOUS UV / LED NEW FORMULA	22 CHERRY UV / LED NEW FORMULA	112 FLAMENCO UV / LED NEW FORMULA	23 MERLOT UV / LED NEW FORMULA	126 ETHNO RED UV / LED NEW FORMULA	
21 SCARLETT UV / LED NEW FORMULA	119 GLAMMY UV / LED NEW FORMULA	100 GRAPE UV / LED NEW FORMULA	117 BROWN UV / LED NEW FORMULA	85 YELLOW UV / LED NEW FORMULA	94 LEMON UV / LED NEW FORMULA	123 SUNNY UV / LED NEW FORMULA	124 PAPAYA UV / LED NEW FORMULA	
121 RED PEARL UV / LED NEW FORMULA	84 NEON ORANGE UV / LED NEW FORMULA	122 ORANGE RED UV / LED NEW FORMULA	120 POMEGRANATE UV / LED NEW FORMULA	110 BOUQUET UV / LED NEW FORMULA	45 MINT UV / LED NEW FORMULA	47 CERULEAN UV / LED NEW FORMULA	08 MAGNOLIA UV / LED NEW FORMULA	
57 CROCUS UV / LED NEW FORMULA	97 ORCHID UV / LED NEW FORMULA	99 SPARKLING VIOLET UV / LED NEW FORMULA	128 PARIS BLUE UV / LED NEW FORMULA	53 INDIGO UV / LED NEW FORMULA	95 LIGHT LIME UV / LED NEW FORMULA	96 UNMATCHED GREEN UV / LED NEW FORMULA	131 NEON LIME UV / LED NEW FORMULA	
43 MALACHITE UV / LED NEW FORMULA	127 BOTTLE GREEN UV / LED NEW FORMULA	129 GREY UV / LED NEW FORMULA	130 GRAPHITE UV / LED NEW FORMULA	80 BLACK UV / LED NEW FORMULA	<i>Pierre René</i> PROFESSIONAL	<i>Pierre René</i> PROFESSIONAL	<i>Pierre René</i> PROFESSIONAL	
<i>Pierre René</i> PROFESSIONAL	<i>Pierre René</i> PROFESSIONAL	<i>Pierre René</i> PROFESSIONAL	<i>Pierre René</i> PROFESSIONAL	<i>Pierre René</i> PROFESSIONAL				
HYBRID	HYBRID	HYBRID	HYBRID	HYBRID	HYBRID	HYBRID	HYBRID	

COLOR

# REMOVING OF HYBRID MANICURE

Gently peel off the HYBRID TOP COAT with a nail file (gradation 180).

...

Put a cotton swab soaked in HYBRID REMOVER on nails and wrap with foil.

To speed up the process use ready aluminium foils (HYBRID REMOVING WRAPS).

...

After 10-15 minutes take off the wraps. Remove the remainings with a wooden stick.

...

Polish the nails with a nail polisher.

## HYBRID CLEANER

Preparation for degreasing nail plate and removing viscous dispersion layer from hybrid varnishes and gel mass with a pleasant aroma of fresh tea. Perfectly degreases and provides a high gloss of nails.

## HYBRID REMOVER

Remover for hybrid nail polish. It quickly dissolves even very thick layers of varnish. Thoroughly cleanses and degreases nail plate without drying it. The formula contains strengthening castor oil.



# HYBRID MANICURE - STEP BY STEP



## STEP 1 PREPARING OF THE NAILS

Gently peel off the nail plate with nail polisher or polishing block to prepare the nails for hybrid manicure. Clean all the dusts with dust-free pledget with HYBRID CLEANER. Put a small amount of HYBRID PRIMER directly on nail plate and wait a few seconds.



## BASE COAT STEP 2

Put the layer of the BASE COAT on the nail plate. Remove the excess of the product from the epidermis with a wooden stick. If you have weak or breakable nail plate use BASE BUILD GEL instead of BASE COAT. With BASE BUILD GEL you can also extend the nails. Harden the product under the lamp LED 30 - 60 s. / UV 2 min.



## STEP 3 COLOR

Apply a thin layer of the polish on nails. Remove the excess of the product from epidermis with a wooden stick. Harden under LED lamp for 30-60 sec / UV lamp for 2 min. Repeat the action for the better colour effect.



## TOP COAT STEP 4

Apply a thin layer of TOP COAT precisely on the whole nail. Remember to secure free edge of the nail plate with the product. Remove the excess of TOP COAT with a wooden stick. Harden under LED LAMP for 30-60 sec / UV lamp for 2 min. After hardening remove a sticky layer of the product with a HYBRID CLEANER. DRY TOP does not leave the sticky layer.





## **BUILDING GEL**

High-quality, single-phase building gel. Medium density, elastic, easy to apply, file and correct. Very good levelling on the nail surface. Due to its properties the gel ensures an exceptional comfort of work and easy reaching of a desired

## **STRAIGHT BRUSH GEL**

Precise brush for even gel application. Ideal for building and shaping nails. Made of high quality synthetic bristle in a metal frame. Folding lid protects hair against dirt and damage, and the plastic tube allows for easy storage.



## **NAIL POLISH DRYER**

Express polish dryer. It protects the polish layer against smudges and scratches, and it ensures perfect shine and brings out the depth of the enamel colour.



## **10 DAYS TOP COAT**

An innovative top coat which guarantees an impeccable manicure for up to 10 days! Its polish formula guarantees durability without the necessity of using an LED/UV lamp. It makes colours more intense and leaves the nail surface smooth and shiny. Owing to specially selected components, the hardener dries quickly and forms a protective layer on the nails which does not turn yellow and is resistant to abrasion and chipping.



## **MATT TOP COAT**

The top coat gives a matt effect and makes the manicure last longer. It gives velvety, matt finish to colourful nail enamels and hybrid polishes. It forms a hard, chip-resistant coating. When used directly on clean nails, it smooths out the nail, hardens it and prevents it from breaking.



## **MAGIC SCRUB**

Nourishing nail and cuticle scrub based on precious argan, almond and macadamia oils which, when combined with massage, significantly improve the appearance of the nail plate and nail area. Magnetic grains remove the corneal layer of epidermis and smooth the skin out intensively and the magnet makes this task very easy. The preparation rubs off any soiling and polishes the nail plate.

# ACCESSORIES



#ACCESSORIES #NAILCLIPPERS #SHARPENER #BRUSHES #SPONGE



MAKE UP  
BRUSH TUBE



PROTECTIVE  
MAKE UP CAPE



MAKE UP  
CHAIR



PROFFESIONAL  
BRUSH BELT

CONTOURING  
BRUSH  
synthetic



103

FOUNDATION  
BRUSH  
synthetic



104

ROUGE POWDER  
BRUSH  
synthetic



105

POWDER  
BRUSH  
synthetic



106

POWDER  
BRUSH  
synthetic



107

CONCEALER  
BRUSH  
synthetic



108

UNDER EYE  
BRUSH  
synthetic



109

HIGHLIGHTER  
BRUSH  
synthetic



110

BROW  
BRUSH  
synthetic



201

EYE SHADOW  
APPLICATOR  
rubycell sponge



202

EYE SHADOW  
BRUSH MINI  
synthetic



203

EYE SHADOW  
BRUSH MEDIUM  
weasel hair



204

EYE SHADOW  
BRUSH MAXI  
horse hair



205

MINI BLEND  
BRUSH  
horse hair



206

MAXI BLEND  
BRUSH  
synthetic



207

EYELINER  
BRUSH  
synthetic



208

LIP  
BRUSH  
weasel hair



301



## **MAKE UP FIXER**

A specialist spray to fix the makeup, intended to use as a make-up finish. It provides an invisible protection film on the skin which guarantees extended durability of the makeup and protects it against wear and smudging. Waterproof.

## **UNIVERSAL CLEANSER**

A preparation for cleaning and caring for cosmetic accessories. It thoroughly removes make-up residue, epidermal cells and oil. Convenient to use. It does not destroy or grease brush hair.



## **BEAUTY SPONGE**

The elliptical shape and a lack of sharp edges allow for perfect application of the foundation with the beauty sponge all over the face. With the beauty sponge, foundation forms a perfect layer on the skin, blends with it perfectly, no streaks or smudges are formed, wrinkles and discolorations are much less visible. The beauty sponge creates the effect of airbrush make-up leaving the skin perfectly smooth and evenly covered with the foundation, powder or concealer.

## **CUTTER**



## **NAIL CLIPPER**



## **DOUBLE SHARPENER**



## **HYBRID REMOVING WRAPS**



## **BLOTTING PAPERS**





## SHOWROOM CONCEPT